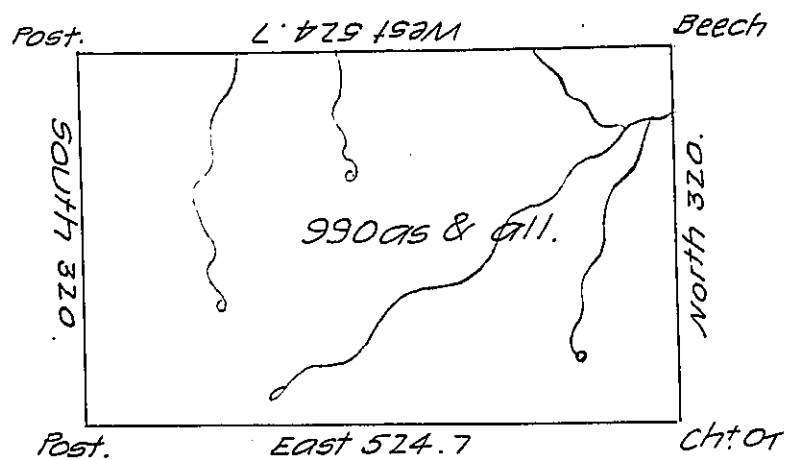


No. 18.

No. 2507.

No. 2444.



No. 2522.

No. 2517.

Situate about three miles South of the Middle Branch of Sinamahoning Creek and about eight miles west of the Drift-wood in North<sup>d</sup> County containing 990 acres and the usual allowance for roads &c. Surveyed September 4th 1793 for Wilhem Willink, Nicolaas Van Staphorst, Christiaan Van Eeghen, Hendrick Vollenhoven and Rutger Jan Schimmelpenninck in in persewance of a Warrant No. 2514 bearing date December 12th 1792

John Canan D.S.

Daniel Brodhead Esqr. S.G.

IN TESTIMONY that the above is a copy of the original remaining on file in the Department of Internal Affairs of Pennsylvania, made conformably to an Act of Assembly approved the 16th day of February, 1833, I have hereunto set my Hand and caused the Seal of said Department to be affixed at Harrisburg, this twenty seventh day of September 1907

Secretary of Internal Affairs.